

Quick Start Guide for installing and running the VPN client software (Checkpoint) on MS Windows 11

Which resources and services can be used via VPN access?

By using the VPN tunnel, you have a secure (encrypted) access to the local resources of the Institute of Computer Science like:

- Internal mail and fax Server, internal Web Services
- File systems (HOME, projects etc.)
- FTP, RSH, Rlogin, R-Desktop

1. Download

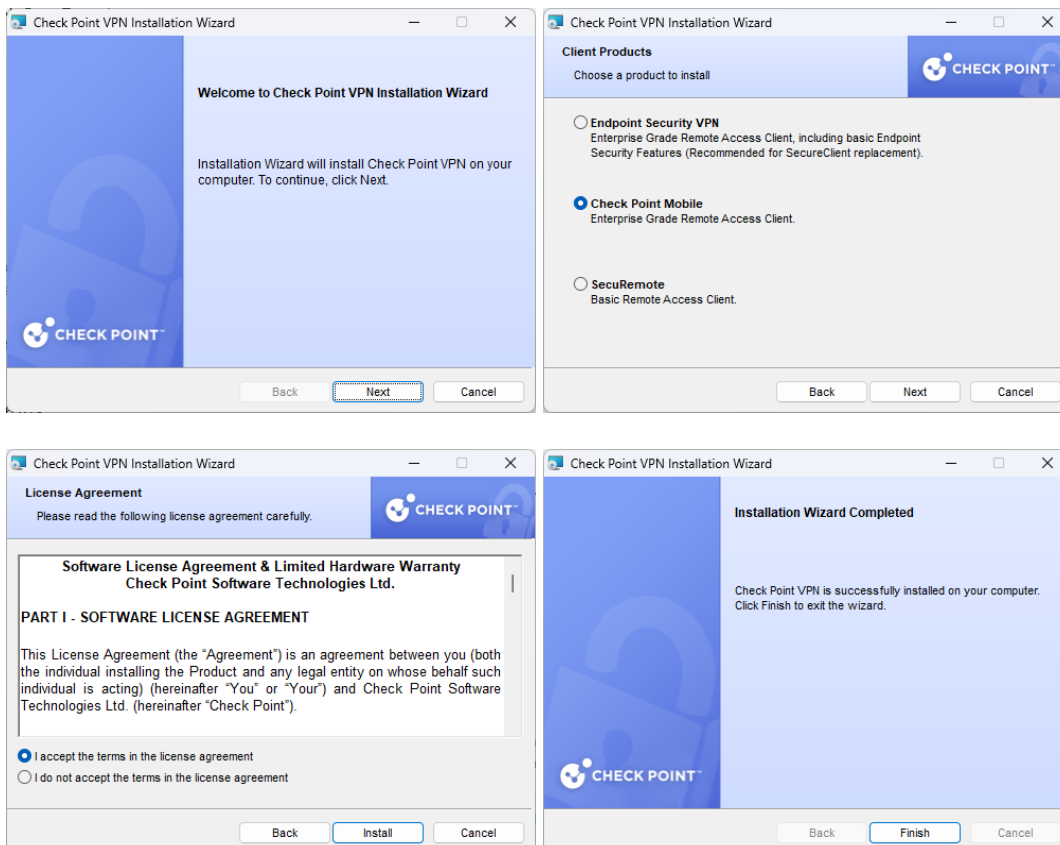
The VPN client software is provided under the following link:

<https://service.informatik.uni-rostock.de/vpn/endpoint/>

Access requires a user account at the Institute of Computer Science.

2. Installation

- The software is located in the folder → Windows: E88.20_CheckPointVPN.msi
- Download and execute
- Follow the setup instructions, Client Product: Check Point Mobile



- make sure that you are connected to the Internet
- Right click the Checkpoint icon in the taskbar (lock) → select **VPN Options**

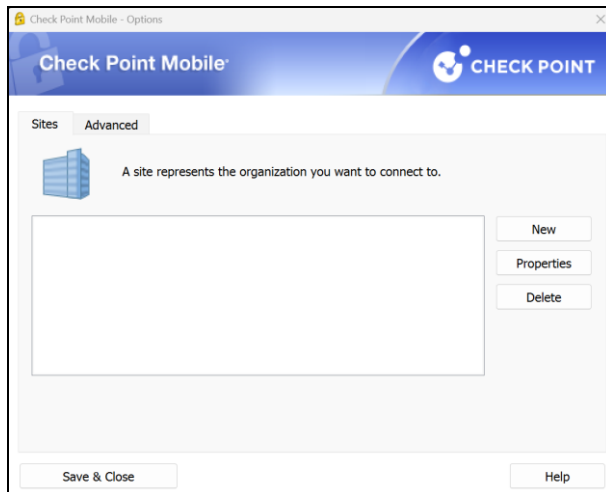


Figure1 VPN Options

- In Options select Sites tab and click **New**
(Setting up a Site is necessary only once after the initial software installation)
- Fill the details according to the following figures
- Finally, you can establish a VPN connection to the Institute of Computer Science

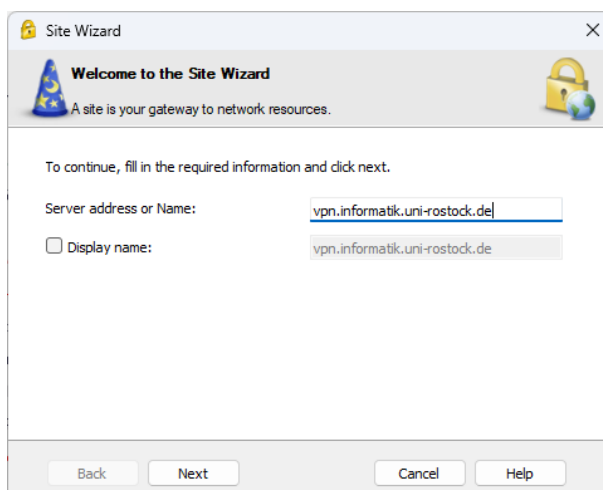


Figure2 Server address [vpn.informatik.uni-rostock.de]

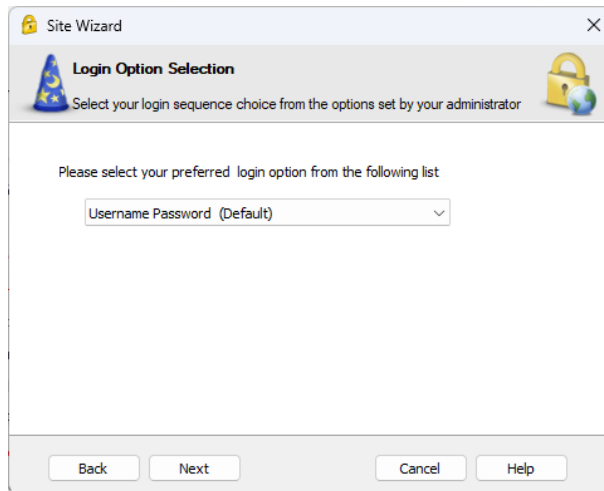


Figure3 Select Username Password

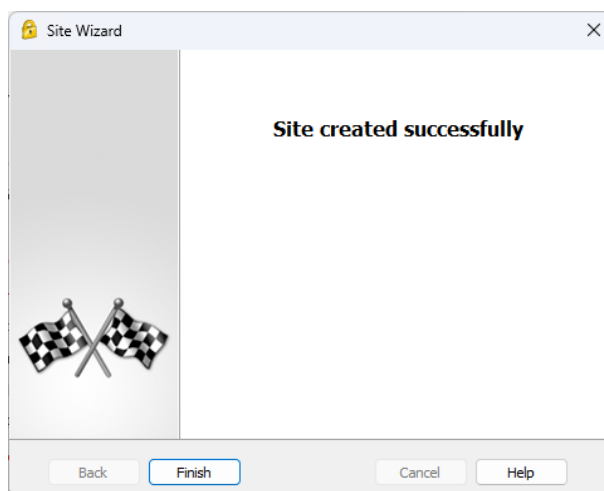


Figure4 Finish

3. Establish a connection

- To establish a VPN connection to the Institute of Computer Science (after successful installation and configuration of the client software) please answer the question: **Would you like to connect?** with **Yes**.
- Alternatively, you can select the menu item **Connect to VPN**. Therefore, you need to right click the Checkpoint icon in the taskbar (lock).
- Now enter your user name and password as shown in Figure 5 and confirm this with **Connect**.

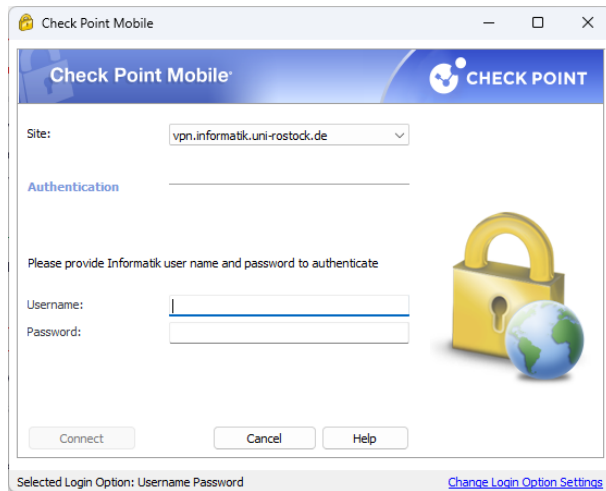


Figure5 Register VPN [Windows Account at the Institutes of Computer Science]

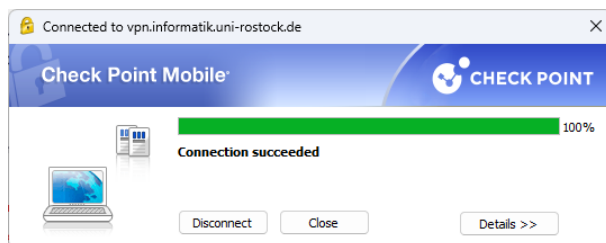


Figure6 Connection created successfully

- Make sure that the settings in the properties (see Figure 1 - VPN Options) correspond to those in Figure 7

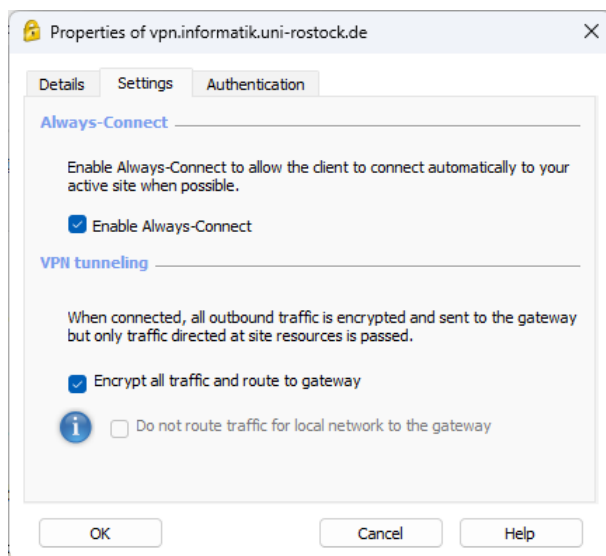


Figure7 Necessary settings

4. VPN Mode

The installed VPN client works in 3 different modes:

1. VPN client stopped
→ connection without VPN
2. VPN Client activated + status "disconnect"
→ tunnel to the Computer Science network closed: no connection to site 'informatik'
3. VPN Client activated + status "connect"
→ tunnel to the Computer Science network opened: full connection to site 'informatik'

5. Further Information

▪ Personal Firewall

Please consider - if you use a personal firewall you need to allow full access to the server `vpn.informatik.uni-rostock.de` through the VPN client.

▪ Establishing a Remote desktop connection

→ Start => Run: `mstsc /v: Servername`

Connect to „servername“

▪ Mounting a network drive

→ Start => Run: e.g. [\\honshu\username](#)

→ Connect to honshu

→ Username: **informatik\username**
Password: (password)

▪ Contact

In case you have any questions, please send an email to:

stg-cs@uni-rostock.de